

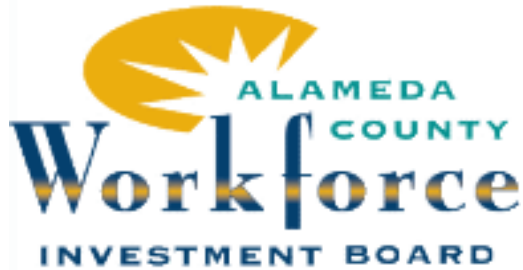
**Overview of
the Alameda County
Workforce Investment Board
and Activities**

**Presented By
Rosario Flores, Program Finance Specialist**



The Alameda County Workforce Investment Board (ACWIB) History

- **Mandated by the Federal Workforce Investment Act (WIA) of 1998.**
- **Convened in March 2000 by the Alameda County Board of Supervisors (BOS).**
- **Charged with developing a new Workforce Development System.**
- **The new system requires services to be delivered in a streamlined manner to job seekers and businesses at a one-stop career center.**



ACWIB Mission

"To provide employers and job seekers with universal access tools, resources and services that assist them with obtaining their employment and business goals"

ACWIB Vision

"The best workforce development system that benefits both employers and job seekers by promoting quality jobs, high skills, high wages and life long learning"



ACWIB Board Composition

- **A 35 member board composed of 18 private sector members and 17 other members from education, economic development, public sector/partner agencies, labor, and the non-profit community.**
- **Membership is stipulated in the Workforce Investment Act (WIA) and California's WIA implementation rules.**
- **Members appointed by the BOS.**
- **WIB Chair selected by private sector members of the Board.**



Youth Policy Council

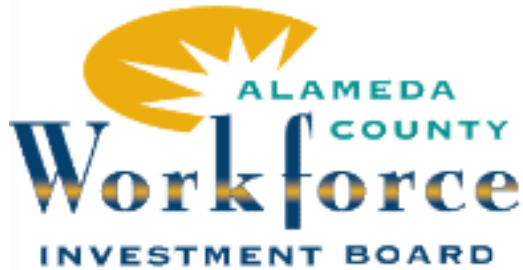
Membership on the Youth Policy Council involves a variety of organizations and people.

- **WIB members**
- **Juvenile Justice**
- **Law Enforcement**
- **Social Services (Employment Services & Foster Care)**
- **Superintendent of Schools Delegate**
- **Youth Services Organizations**
- **WIA Eligible Youth**
- **Parents of WIA Eligible Youth**
- **One-stop Career Center**
- **State Employment Development Dept**
- **Housing Agency**

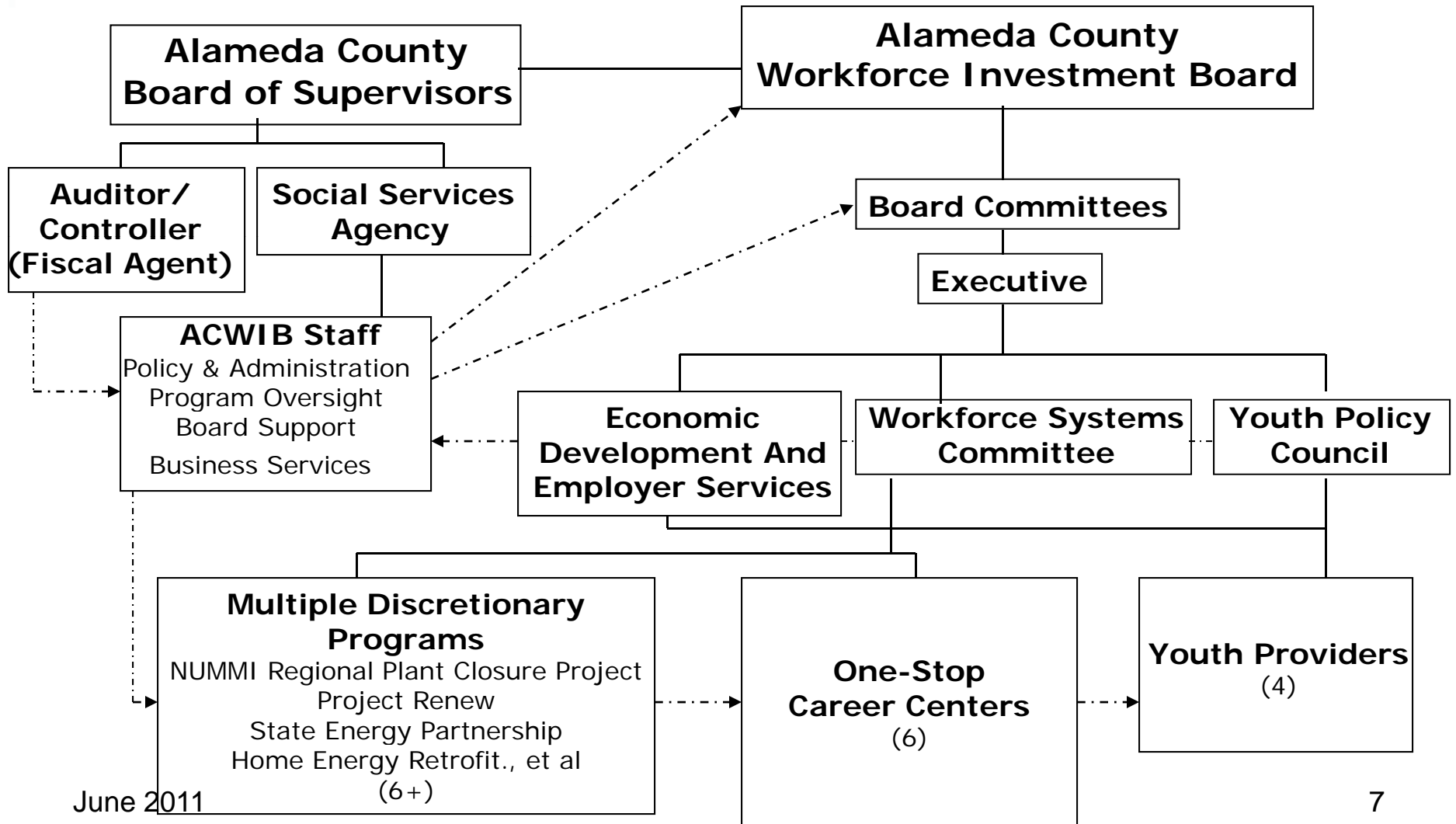


Youth Policy Council Purpose

- **Set priorities and develop funding guidelines for WIA programs**
- **Identify program strategies that achieve goals outlined in the Local Workforce Investment Plan**
- **Recommend programs based on funding criteria approved by the WIB**
- **Promote collaboration amongst youth program providers**
- **Encourage leveraging of funds to increase resources available to the Area.**



ACWIB Organizational Relationships





ACWIB Roles & Responsibilities

“Integrate a local workforce system that is flexible, seamless, and responsive to the needs of both job seekers and employers.”

Specific activities include:

- **Building a better workforce - linking employers and individuals to education and training programs.**
- **Serving as the region's workforce broker - bringing employers and qualified applicants together.**
- **Promoting long-term employability and lifelong learning by providing access to training to ensure competitiveness in today's labor market.**
- **Coordinating youth program activities through the Youth Policy Council.**



ACWIB Funding

Funds Available at the Start of the Program Year

Grants:	PY 11-12	PY 10-11
<u>FORMULA:</u>		
Adult Programs	\$1,754,480	\$1,834,475
Dislocated Workers	\$2,923,775	\$3,040,208
Youth Programs (Must serve 13 cities)	\$2,087,026	\$1,975,361
Rapid Response	\$750,000	\$1,006,199

DISCRETIONARY GRANTS:

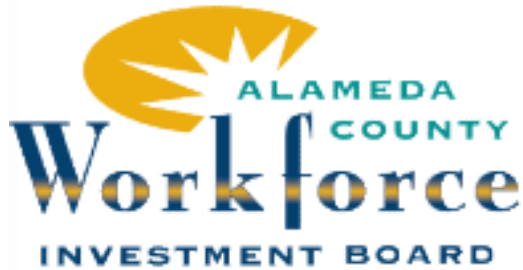
NUMMI Plant Closure (2 years - \$14,428,616)	\$6,439,066	\$7,989,550
SESP, HERO, Clinical Lab	\$1,361,126	\$1,912,470
	<u><u>\$15,315,473</u></u>	<u><u>\$17,758,263</u></u>



Service Delivery System Purpose

“To coordinate and improve employment and training, literacy and vocational rehabilitation programs, and to meet employer needs for skilled workers in the global economy. “

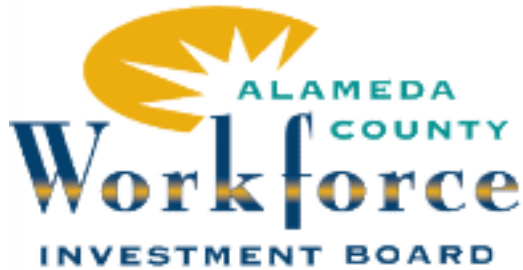
- **One Stop Career Center Services:**
 - The mandatory employment assistance/workforce development services system for Job Seekers,
 - System for the Provision of Services to Employers
- **Targeted Youth Services:**
 - 16-21 years of age, low income and have barriers which would hinder them from completing an educational program or securing employment



One-Stop Career Center Operators 2011/2012

- 1. College of Alameda –serving the city of Alameda**
- 2. Rubicon Programs (2) –serving the North Cities and Eden Areas in Hayward and Berkeley**
- 3. Chabot-Las Positas Community College District – serving the Valley in Pleasanton**
- 4. Ohlone College – serving the Tri-Cities Area in Newark**
- 5. Employment Development Department (EDD) – serving the Tri-Cities Area in Fremont**

**(SEE FLYER/HANDOUT FOR DIRECT ADDRESSES
& PHONE NUMBERS FOR ONE STOPS)**



Youth Providers for Employment Plus II 2011/2012

- 1. Berkeley Youth Alternatives (BYA) serving 69 youth residing in the North Cities**
- 2. Hayward Adult School (HAS) serving 28 youth residing in the Unincorporated Areas & 47 in the Eden Area = 75**
- 3. Chabot College, et al serving 52 youth residing in the Tri-Cities**
- 4. Tri-Valley Community Foundation serving 32 youth residing in the Valley**

**(SEE HANDOUT LISTING EPP II YOUTH PROVIDERS
DIRECT ADDRESSES & PHONE NUMBERS)**



ACWIB Services to Job Seekers Enrollments & Outcomes

Enrollments :

Fund Stream:	PY 09-10*	PY 10-11*	PLANNED PY 11-12
ADULTS	568	657	542
DISLOCATED WORKER	1022	1128	771
YOUTH (Older & Younger)	387	348	215
SUMMER YOUTH (ARRA/ (CalWorks*))	649*	700*	102 (EPP II)

Outcomes:

Fund Stream:	PY 09-10	PY 10-11
ADULTS (Ent. Employment)	168	144
DISLOCATED WORKER (Ent. Employment)	303	243
OLDER YOUTH (Ent. Employment)	304	31
YOUNGER YOUTH (Attain HS Diploma)	131	39
SUMMER YOUTH (Goals)	649	-

* Includes Enrollment Goals for American Recovery & Reinvestment Act (ARRA)



ACWIB PARTNERSHIPS - Youth

Education:

Higher Education

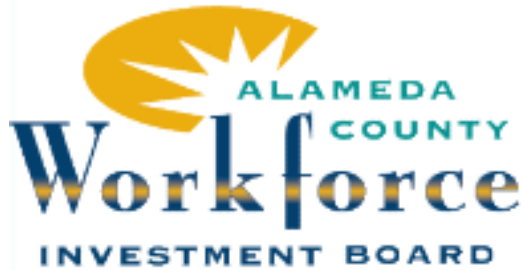
- Career Center Operations – Chabot, Las Positas District, Alameda
- Sector Initiatives
- Career Pathway Program Design
- Co-hort Training

Local Education Agencies (Adult Schools)

- Employment Plus II Program - Hayward
- Reform and Outreach – New Haven

Community Initiatives:

- Ashland/Cherryland Violence Prevention Collaborative
- Ashland Youth Center (AYC) – Strategic Planning – Youth Employment Component
- Hayward Call to Action
- Promise Neighborhoods – Jackson Triangle - Hayward



ACWIB PARTNERSHIPS (con't)

Social Service Agency:

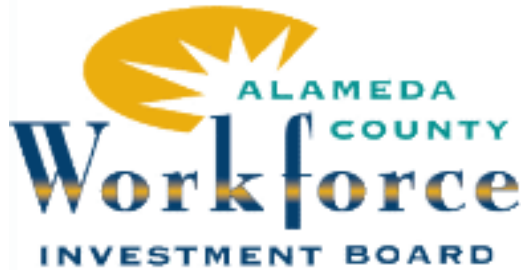
- **MOU with SSA for Career Center Services and WIA Coordination**
- **AC Hire Marketing and Referral**
- **Summer Youth Program 2010 – Implementation/Operations**
- **First Source Pilot**
- **Employer Focus Group for Subsidized Employment Program**

County Administrator's Office:

- **New Beginnings – WIA Co-enrollments, Technical Assistance, etc.**

Public Works Agency & General Services Agency (GSA):

- **Alameda County Apprenticeship Collaborative**



American Recovery and Reinvestment Act (ARRA)

ARRA/Recovery Act – Period of 02/17/2009 to 03/31/2011

Adult Programs **\$870,777**

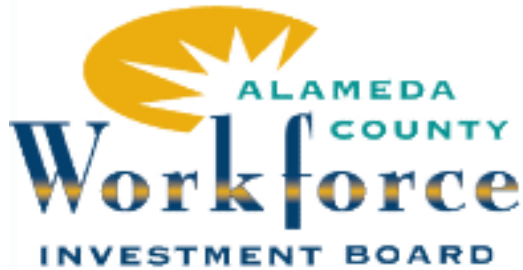
Dislocated Workers **\$3,258,718**

Youth Programs (2009 Summer Job Program) **\$2,147,775**

Rapid Response **\$787,196**

\$7,064,466

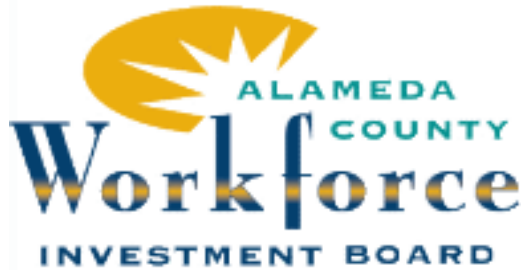
All funds spent by 03/31/2011



NUMMI Regional Plant Closure Project

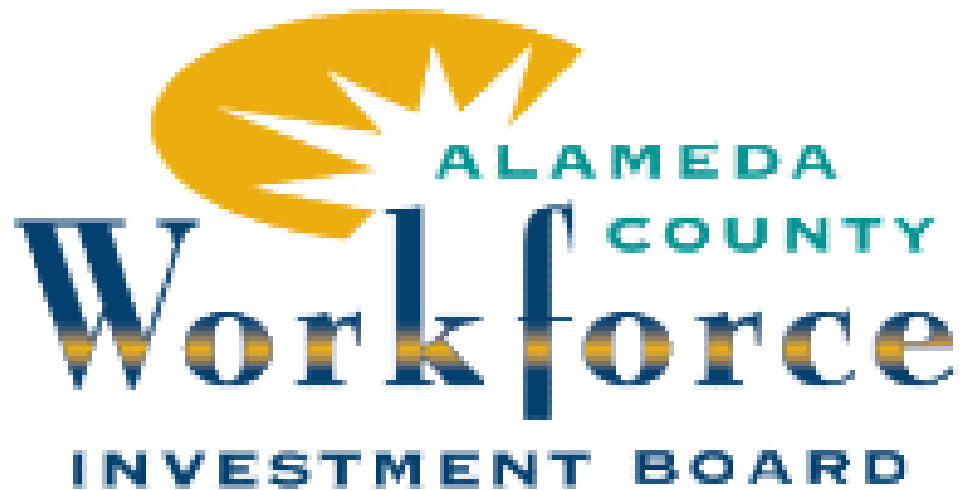
Local Workforce Investment Areas (LWIAs) Impacted by the Plant Closure:

- **Alameda County**
- **Contra Costa County**
- **Oakland City**
- **San Joaquin County**
- **Stanislaus County**
- **Solano County**
- **San Jose/Silicon Valley Work2Future**



ACWIB Current Workforce Challenges 2011/2012

- **11.7% Unemployment Rate in California (May 2011)**
- **10.2% in Alameda County; 75,400 Unemployed and likely to rise**
- **One-stop Career Centers (6) overwhelmed with job seekers of all types and professions**
- **WARN Notices have slowed, but businesses continue to lay off**
- **Tax revenues are diminishing**
- **State Workforce Legislation – SB776 Threatens Local Career Center funding**



Please visit our website:

www.acwib.org

and

www.nummi.info

**Rosario Flores Program ACWIB Finance Specialist
(510) 259-3827**